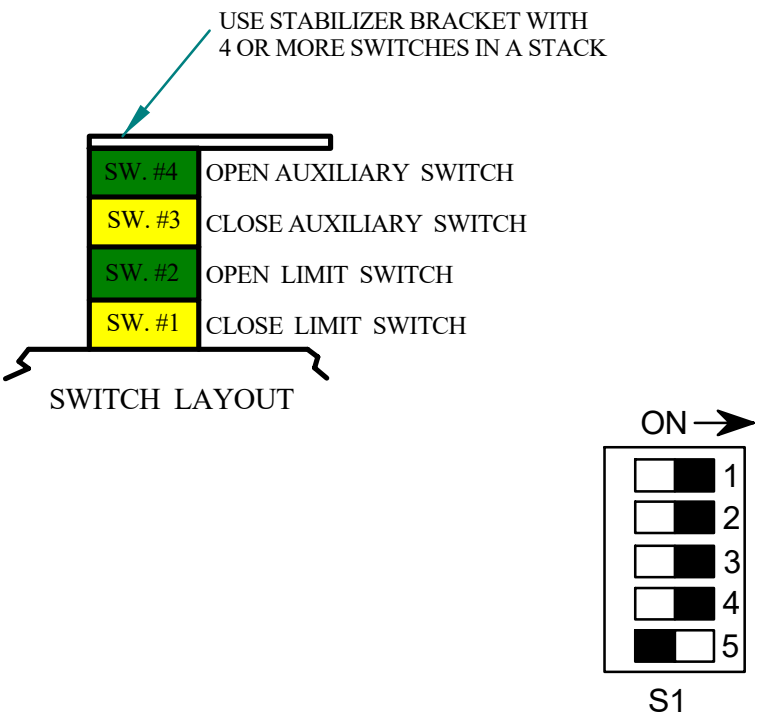
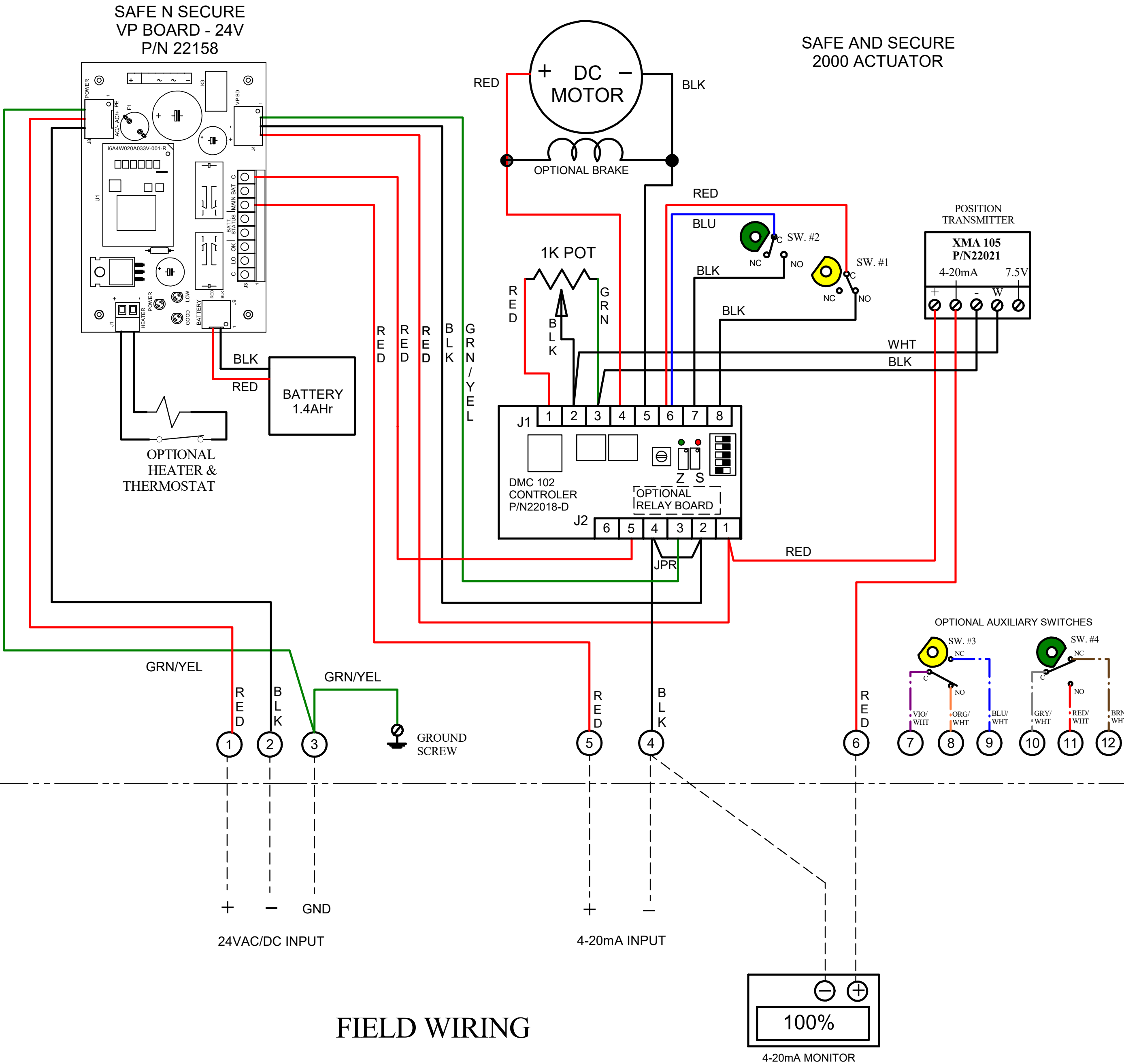


REV	DESCRIPTION	DATE	BY
1	ADDED EARTH GROUND REFERENCED	16NOV23	DJB
2	ADD LATEST S&S BOARD AND WIRING MODS	28NOV23	DJB
3	NEW BACKGROUND, LOGO & COMPONENT P/Ns	23MAY25	DJB



ACTUATOR SHOWN IN OPEN POSITION

- NOTES:**
- 1) INPUT POWER SOURCE TO BE 24VAC OR 24VDC @ 8A MINIMUM.
 - 2) INPUT FUSE IS PICO, TR5 AT 10A, 250VAC.
 - 3) UNIT IS SHIPPED WITHOUT THE BATTERY PLUGGED IN. AFTER INSTALLING UNIT AND CONNECTING INCOMING POWER, PLUG THE POSITIVE BATTERY WIRE PUSH ON ONTO THE RED BATTERY TERMINAL.
 - 4) CAMS FOR LIMIT SWITCHES ARE PRESET AT THE FACTORY. TO INCREASE OR DECREASE VALVE MOTION, ADJUST SLIGHTLY THE ZERO (Z) OR SPAN (S) POTS ON THE POSITIONER BOARD.
 - 5) THE "FAIL" CONDITION IS SET PER THE DIP SWITCHES ON THE DMC-102 CONTROLLER BOARD - SEE DATA SHEET FOR SETTINGS FOR FAIL OPEN, CLOSE OR FAIL IN PLACE.
 - 6) WHEN INCOMING POWER IS PRESENT, BLUE LED WILL BE LIT AND ACTUATOR RUNS OFF OF INCOMING POWER. WHEN INCOMING POWER FAILS, BLUE LED WILL TURN OFF AND THE YELLOW BATTERY LED WILL LIGHT - ACTUATOR WILL MOVE TO THE "FAIL" POSITION 1 TIME AND STAY THERE UNTIL POWER IS RESTORED.
 - 7) RED LED WILL LIGHT WHEN BATTERY VOLTAGE GETS TOO LOW. GREEN LED WILL LIGHT WHEN BATTERY VOLTAGE IS ABOVE 10.5VDC.
 - 8) 4-20mA SIGNAL IS DELIVERED TO THE DMC-102 DC BOARD TO OPEN AND CLOSE THE ACTUATOR.
 - 9) THE ACTUATOR WILL "FAIL" TO THE OPEN OR CLOSE POSITION IF THE 4-20ma SIGNAL OR IF INCOMING POWER FAILS.
 - 10) DRY CONTACTS ARE PROVIDED TO INDICATE BATTERY STATUS AND INCOMING POWER STATUS. BATTERY STATUS CAN BE CHECKED WITH THE INCOMING POWER ON BY SHORTING THE 2 BATT TEST POINTS J7-2 & J10-1 MOMENTARILY.

THE USER IS REQUIRED TO MAKE SURE THAT THE DC POWER GROUND (-) AND THE CONTROL SIGNAL GROUND (-) ARE TIED TOGETHER. AND ALSO REFERENCED TO EARTH GROUND AT THE CONTROL CABINET

PROPRIETARY

THE INFORMATION CONTAINED IN THIS DRAWING/ DOCUMENT IS THE SOLE PROPERTY OF INDELAC CONTROLS INC. ANY REPRODUCTION IN PART OR AS A WHOLE WITHOUT THE WRITTEN PERMISSION OF INDELAC CONTROLS IS PROHIBITED Copyright. © 2025 Indelac Controls, Inc All rights reserved.

INDELAC
CONTROLS, INC.

Indelac Controls, Inc.
Florence, Ky. 41042

WIRING DIAGRAM, SAFE N SECURE 2000, 24VAC/DC, "L" SERIES; WITH TRANSMITTER & 4-20mA POSITIONER, OPTIONAL HEATER & AUXILIARY SWITCHES - SINGLE ENCLOSURE

WJR

29JUN20

W200629