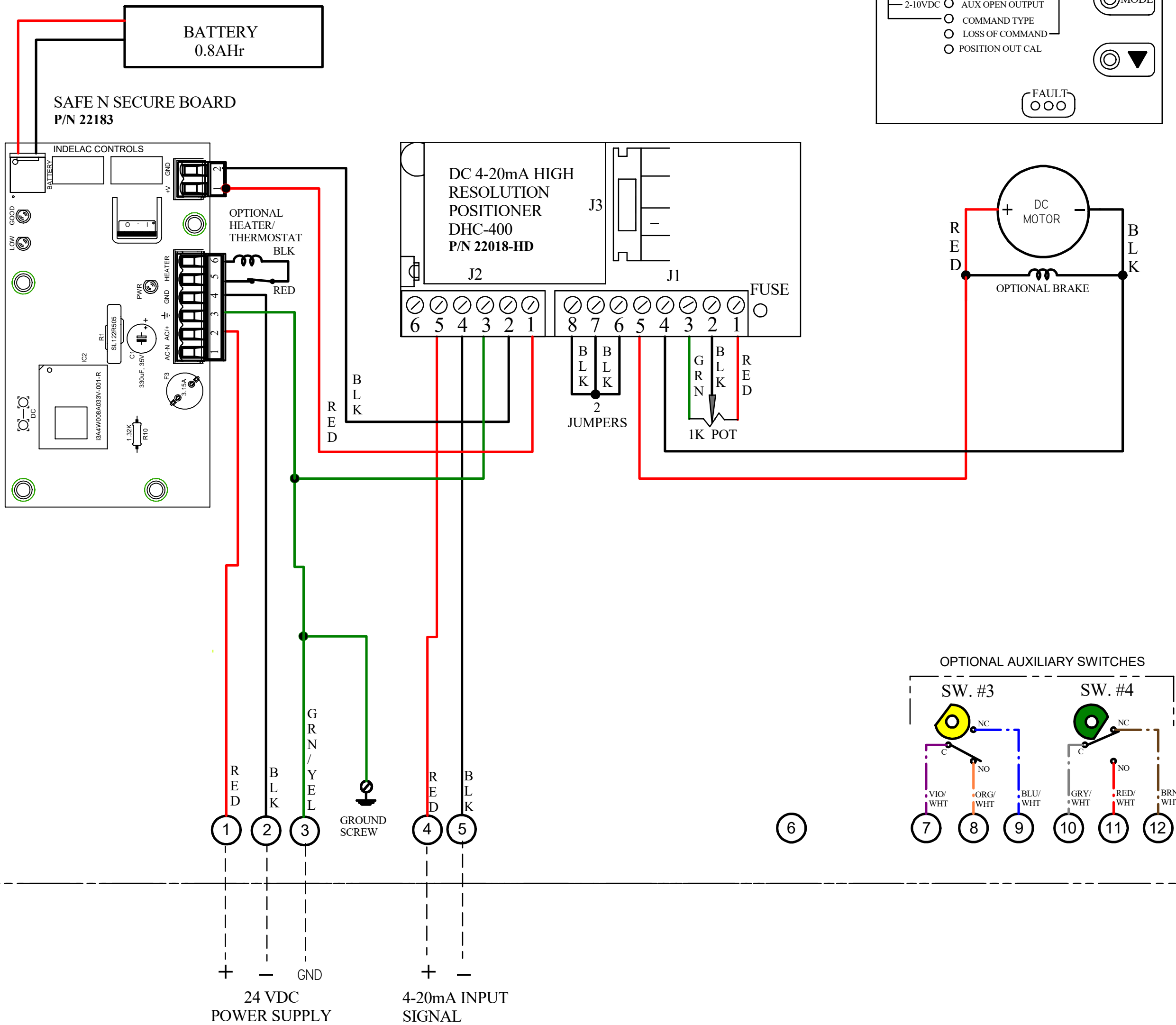


ACTUATOR SHIPPED IN OPEN POSITION
UNLESS OTHERWISE SPECIFIED

SEE OPERATION NOTE
- PLUG IN BATTERY



REV	DESCRIPTION	DATE	BY
1	MOVED HEATER CONNECTONS TO 4 & 5 FOR DC POWER	21JUN19	WJR
2	MOVED HEATER CONNECTONS TO 4 & 5 FOR DC POWER	21JUN19	WJR
3	ADD LATEST S&S BOARD AND WIRING MODS	27OCT24	DJB
4	NEW BACKGROUND, LOGO & COMPONENT P/Ns	04JUN25	DJB

- INSTRUCTIONS:**
- This actuator has been set at the factory. If calibration is required after the valve is installed, it is not necessary to adjust the potentiometer or limit switches.
1. Apply 24VDC power to terminals 1 & 2.
 2. Push MODE button until yellow "MANUAL/FB POT CAL" LED is illuminated. The LED may be flashing through the next several steps.
 3. Using the UP & DOWN buttons, operate the actuator to the mid position.
 4. If the LED is solid proceed to step 7.
 5. If LED is flashing, loosen the set screw in potentiometer gear on the drive shaft and rotate gear until LED is no longer flashing. NOTE: The farther away from the potentiometer mid position the slower the flashing becomes.
 6. Tighten set screw in potentiometer. The solid LED indicates that the potentiometer is set in the mid position.
 7. Push MODE button until the "CLOSE" LED is illuminated. Use the up/down buttons to drive the actuator to the desired position.
 8. Push the "MODE" button until the "OPEN" LED is illuminated. Use the up/down buttons to drive the actuator to the desired position.
 9. Push the mode key until the "Command Type" LED is lit. Push the up/down button to select the appropriate command signal, 4-20mA should be illuminated.
 10. Push MODE button until "LOSS OF COMMAND" LED is illuminated. Use the UP/DOWN buttons to select the failure mode upon loss of command signal, stay in last position, drive open or drive close.
 11. Push the MODE button until the red "AUX POSITION OUT CAL" LED illuminates while the "CLOSE LED" flashes.
 12. Press the MODE button until the "Auto" LED is lit.
 13. Actuator is now calibrated and ready.

OPERATION:

ACTUATOR IS SHIPPED WITH THE BATTERY UNPLUGGED FROM THE BOARD. WHEN THE ACTUATOR IS INSTALLED, PLUG THE BATTERY INTO J1 ON THE SAFE AND SECURE BOARD.

ACTUATOR WILL RUN ON DC INPUT POWER USING 4 - 20mA COMMAND SIGNAL FROM CONTROL PANEL. IF COMMAND SIGNAL COMMUNICATION SHOULD BE BROKEN OR POWER TO ACTUATOR & COMMAND SIGNAL DROP OUT, BATTERY POWER WILL DRIVE THE ACTUATOR TO THE SET FAIL POSITION AND REMAIN THERE UNTIL THE INPUT POWER COMES BACK ON. SEE MANUAL FOR SETTING THE DESIRED FAIL POSITION USING THE SELECTOR SWITCHES.

IF INPUT POWER SHOULD FAIL, BUT THE COMMAND SIGNAL IS STILL PRESENT, THE ACTUATOR WILL CONTINUE TO RUN ON BATTERY POWER UNTIL BATTERY POWER DROPS BELOW 9 VDC.

FIELD WIRING

PROPRIETARY THE INFORMATION CONTAINED IN THIS DRAWING/ DOCUMENT IS THE SOLE PROPERTY OF INDELAC CONTROLS INC. ANY REPRODUCTION IN PART OR AS A WHOLE WITHOUT THE WRITTEN PERMISSION OF INDELAC CONTROLS IS PROHIBITED Copyright. © 2025 Indelac Controls, Inc All rights reserved.	INDELAC Indelac Controls, Inc. CONTROLS, INC. Florence, Ky. 41042		
	WIRING DIAGRAM, SAFE & SECURE, 24 VDC ACTUATOR WITH 4-20mA HIGH RESOLUTION POSITIONER, BRAKE HEATER/THERMOSTAT & 2 AUX. SWITCHES		
	WJR	02FEB17	W170201