

L SERIES

700, 1200, 2000 & 3840 IN-LBS
NEMA 4 AND/OR 7

ICI's L series actuator was designed for valve and damper applications requiring from 700 up to 3,840 in-lbs of torque. This industrial grade reversing actuator has been manufactured since 1991 and is well known for its dependability in harsh applications where reliability is of the utmost importance.



SPECIFICATIONS:

TORQUE	LA-5	700 In-Lb (79 Nm)
	LA-12	2000 In-Lb (226 Nm)
	LX-5	1200 In-Lb (135.6 Nm)
	LX-14	3840 In-Lb (433.9 Nm)
CYCLE TIME	LA-5	5 Sec./90
	LA-12	12 Sec./90
	LX-5	5 Sec./90
	LX-14	14 Sec./90
DUTY CYCLE	12Vdc, 24Vdc, 24Vac & 115Vac 100%	
	230Vac-1Ph 30 minute continuous run	
	230Vac-3Ph & 460Vac-3Ph 30 minute continuous run (NEMA 4 only)	
MOTOR	Permanent split capacitor (for AC) with thermal overload protection	
CURRENT RATINGS	FL= Full Load, LR= Lock Rotor	

	115VAC (Std.)		24VAC & 24VDC		12VDC		208VAC/1PH		230VAC/1PH		230VAC/3PH		460VAC/3PH	
	FL	LR	FL	LR	FL	LR	FL	LR	FL	LR	FL	LR	FL	LR
LA	1.20	2.90	3.70	25.00	6.90	48.00	1.54	2.50	1.40	2.00	1.2	3.8	0.6	1.97
LX	1.20	2.90	5.00	25.00	10.00	48.00	1.54	2.50	1.40	2.00	1.2	3.8	0.6	1.97

The motor's LR amps must be taken into account when sizing the input power supply and fuses. Slow blow fuses are recommended

CERTIFICATION	CSA	Master Contract 178618
CLASSIFICATION	Class I, Division 1 & 2, Groups C & D; Class II Division 1 & 2, Groups E, F & G	
CANADIAN	CSA C3228 02 – Valves – Actuators – For Hazardous Locations, CSA C3229 82 – Valves – Actuators – For Hazardous Locations – Certified to US Standards CSA – C22.2 No. 0-M1991; CSA – C22.2 No. 139-1982; CSA – C22.2 No. 0.4-04; CSA – C22.2 No. 25-1966; CSA – C22.2 No. 94-M91; CSA- C22.2 No. 30-M1986; UL 1002, 6th Ed.; UL 429, 5th Ed.; UL 50 11th Ed.	
CERTIFIED VOLTAGES	115Vac	
CERTIFIED ENCLOSURES	Enclosure Type 4, 4X, 7 & 4-7	
CERTIFIED TEMP.	-4F (-20C) to 104F (40C)	
CERTIFIED OPTIONS	One or Two Auxiliary Switches, Declutching Manual Override with Hand Wheel, Motor Brake for 115Vac, Visual Position Indicator, Special Mounting Pad Configurations and Mechanical Stop (For complete list of options, see option grid in catalog page 40)	
COATING	Thermally bonded polyester powder	
POSITION INDICATOR	Visual	Dome Indicator
	Electric	Feedback from limit switches, same as operating voltage
SWITCHES	Snap action	SPDT, 15A @ 250Vac



L SERIES

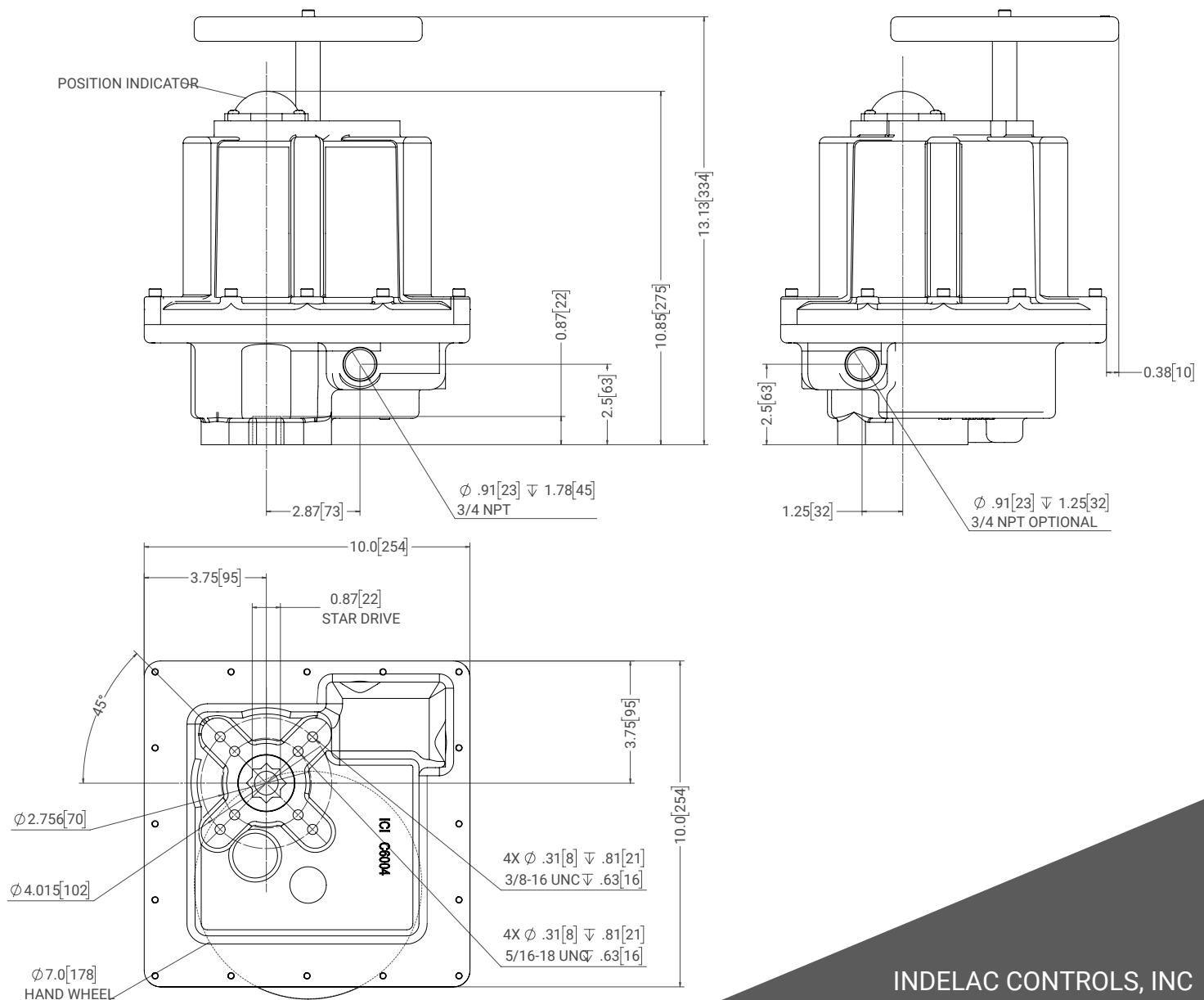
700, 1200, 2000 & 3840 IN-LBS

NEMA 4 AND/OR 7

INDELAC
CONTROLS, INC.
ELECTRIC ACTUATORS AND CONTROLS

LUBRICATION	Grease	Permanent, little or no maintenance required
WEIGHT	40 lb (18.1 kg)	
MOUNTING	Universal	
MOUNTING PAD	ISO 5211 F07 & F10 with F10 22mm Star Female Drive	
TEMPERATURE	-40F (-40C) to 150F (65.6C), heater & thermostat required 0F and below Optional double heater for application down to -76F (-60C)	
OVERRIDE	Manual, Declutching Hand Wheel	

TECHNICAL DRAWING:



INDELAC CONTROLS, INC
WWW.INDELAC.COM
1 + 859-727-7890