

# SD SERIES

## SPECIFICATIONS:

Torque	200 Lb-In & 300 Lb-In
Cycle time	5 seconds/90° 115Vac & 230Vac 10 seconds/90° with 75% duty cycle 9.0 seconds/90° 12Vdc, 24Vdc & 24Vac
Duty Cycle	25% standard 115Vac & 230Vac 75% optional 75% 12Vdc, 24Vdc & 24Vac
Motor	Permanent split capacitor 115Vac/1ph/50-60Hz standard With thermal over load protection
L. R. Current	200 Lb-In 0.75 amps 115Vac 300 Lb-In 0.99 amps 115Vac 0.38 amps 230Vac 4.2 amps 12Vdc, 2.6 amps 24Vdc
Enclosure	NEMA 4 standard, CSA certified CSA file #LR79567
Coating	Thermally bonded polyester powder
Fasteners	Captive, 300 series stainless steel
Output	ISO 5211 F05 300 series stainless steel
Mounting Pad	ISO 5211 F03, F05 & F07
Over Ride	Manual, not declutching Declutching manual over ride optional DC voltage must be declutching

Brake  
Position Ind.

Weight  
Lubrication  
Installation  
Temp. Range

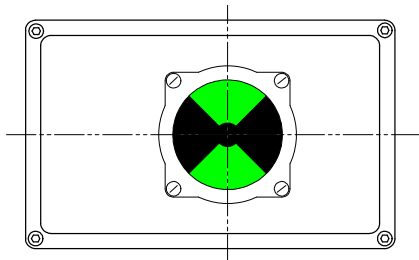
Switches

Friction, standard  
Visual indicator  
Wired for light indication  
6 Lbs.  
Permanent  
Universal  
-40°F. to 150°F.  
Heater & thermostat required 0°F. & below  
SPDT snap action  
16 amp ½ HP 125, 250Vac, 0.5amp 125Vdc



## SD SERIES NEMA 4

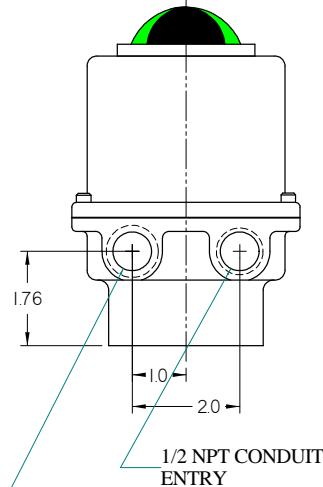
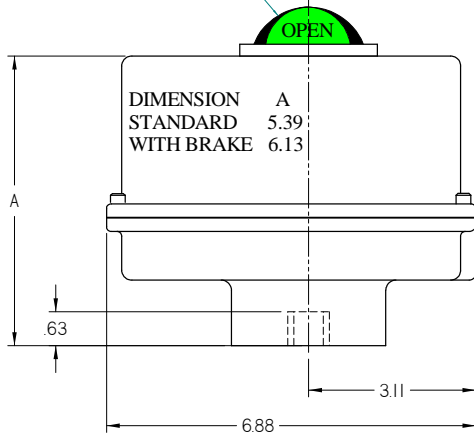
### Model SD4B-5



TO MANUALLY OVER RIDE  
REMOVE BEACON AND ROTATE  
SHAFT WITH 3/8" WRENCH

ALLOW 3" FOR  
COVER REMOVAL

POSITION  
INDICATOR



1/2 NPT CONDUIT  
ENTRY

OPTIONAL CONDUIT  
ENTRY

4, 10-24 TAP, .44 DP.  
1.4173 B.C.

4, 1/4-20 TAP, 0.44 DP.  
1.969 BC

4, 5/16-18 TAP, .5 DP.  
2.756" BC.