

# MODELS: LA & LX

## NEMA 4 & 7

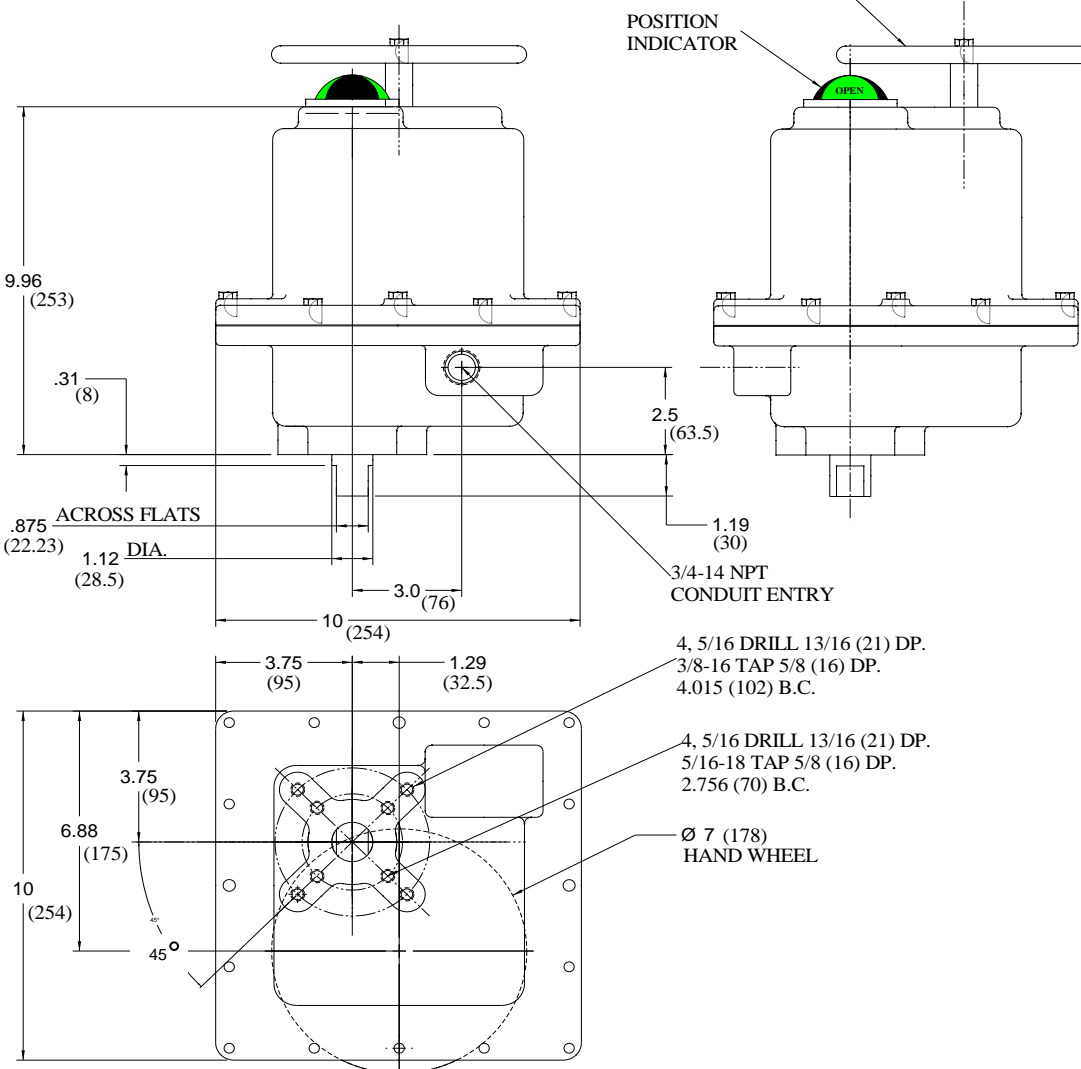
### SPECIFICATIONS:

<b>Torque</b>	LA...2000 Lb-In (226 Nm) LX...3840 Lb-In (434 Nm)	<b>Coating</b>	Thermally bonded polyester powder
<b>Cycle time</b>	LA...12 seconds/90° LX...14 seconds/90°	<b>Fasteners</b>	300 series stainless steel
<b>Duty Cycle</b>	Continuous	<b>Output</b>	ISO 5211 F07 300 series stainless steel
<b>Motor</b>	Permanent split capacitor 115Vac/1ph/50-60Hz standard With thermal over load protection	<b>Mounting Pad</b>	Male double "D" shaft with 4.242 BC
<b>L. R. Current</b>	115Vac LA= 1.50 amps (FL=0.98 amps) 115Vac LX= 2.90 amps 230Vac LA= .80 amps 230Vac LX=1.50 amp 12Vdc LA=4.93 amps 12Vdc LX=6.83 amps	<b>Over Ride</b>	Manual, declutching
<b>Enclosure</b>	NEMA 4 standard, C, US certified by CSA NEMA 7 optional, C, US certified by CSA	<b>Brake</b>	Power Off, optional
		<b>Position Ind.</b>	Visual indicator Wired for light indication
		<b>Weight</b>	40 Lbs.
		<b>Lubrication</b>	Permanent
		<b>Installation</b>	Universal
		<b>Temp. Range</b>	-40°F. to 150°F. Heater & thermostat required 0°F. & below
		<b>Switches</b>	SPDT snap action 16 amp ½ HP 125, 250Vac, 0.5amp 125Vdc

ALLOW 6" (152) TO REMOVE COVER

MANUAL OVER RIDE  
HAND WHEEL

POSITION  
INDICATOR



L-Series NEMA 4



L-Series NEMA 7

